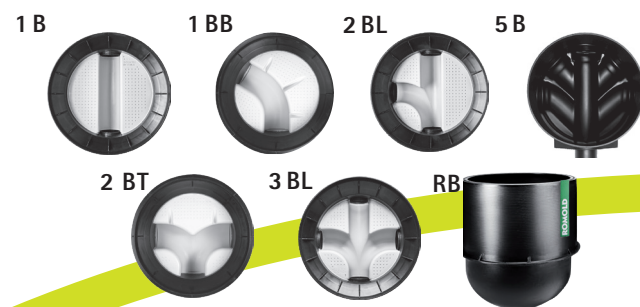


# ROMOLD CHAMBER SYSTEMS

## AN OVERVIEW

DIAMETER 500 TO 1250

ALL CHAMBERS  
CLASS D  
DRIVABLE

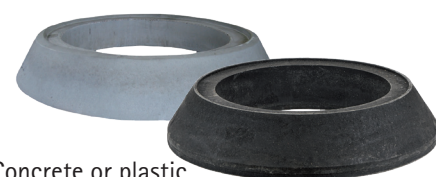


A variety of channels offer the best solutions for every inlet and outlet



Standard gradient in all ROMOLD bases

Concrete or plastic distribution rings



Cone



Element seal



Ring

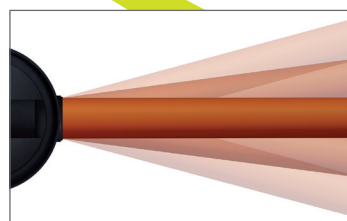


Element seal

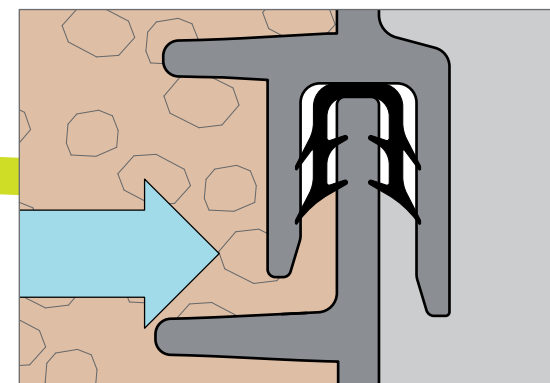
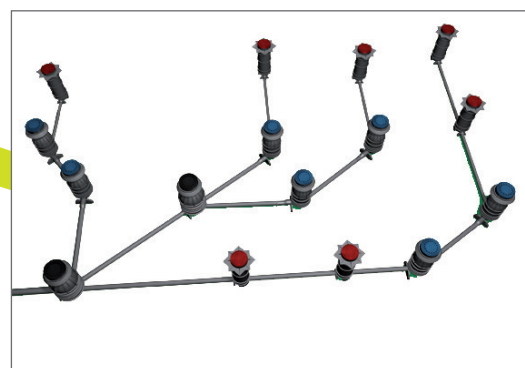


Base

The principle of the ROMOLD system chamber in accordance with EN 13598-2 and EN 476



Optimised sewage network, the same functional capacity and maintenance possibilities as traditional sewage networks  
black: 2 x DN 1000 (access chamber)  
blue: 7 x DN 800 (manhole)  
red: 7 x DN 625 (inspection chamber)



3-sided element seal (Triple-Safety-Seal) The only chamber element seal that seals inwards and outwards.

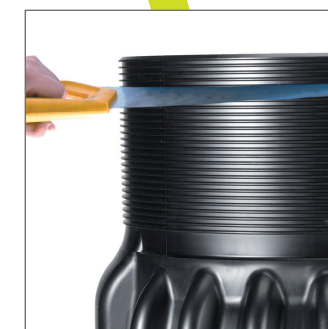
### DID YOU KNOW:

From the moment that a norm (EN/ DIN) takes effect, the norm conformity substitutes a DIBt certification.

**EN 13598-2**  
Conformity guaranteed



Low component weight with load weight category 4



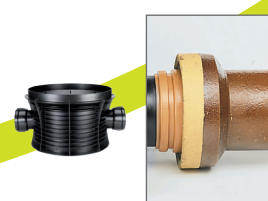
Chamber cone can be shortened in cm increments



Welding by means of waste water electro-fusion socket with PE-pipes that comply with DIN 8077 and DIN 8075.



PVC-KG-pipes that comply with EN 1401 and/or PP-pipes that comply with EN 1852 can be connected directly.



Pipes made from other materials (e.g. clay or corrugated pipes), are connected using standard adapters.



Pipe connection in the chamber wall is no problem with ROMOLD seals / connection saddles.