

# PROJECT QUESTIONNAIRE

ROMOLD PE- cable chamber DN 625, water tight

Romold GmbH  
 Sägewerkstraße 5  
 D-83416 Surheim  
 Tel: +49-8654-4768-0  
 Fax: +49-8654-4768-47  
 E-mail: verkauf@romold.de



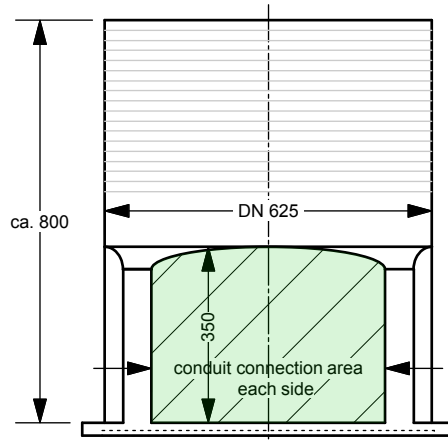
order       request for information  
 project: \_\_\_\_\_

chamber no.: \_\_\_\_\_

model:      **o KS 63/80**  
 height H=80cm

**o ROMOLD - system cover:**  
 class: **o PE- lid**   **o A15**   **o B125**   **o D400**  
please indicate

**o concrete load distribution ring**  
 for commercial, water tight cover system



\*) for informations regarding max. conduit connection see internet:  
[www.romold.de](http://www.romold.de) -> products -> electric & telecommunications  
 -> cable chambers model KS/FC

conduit connection\*)

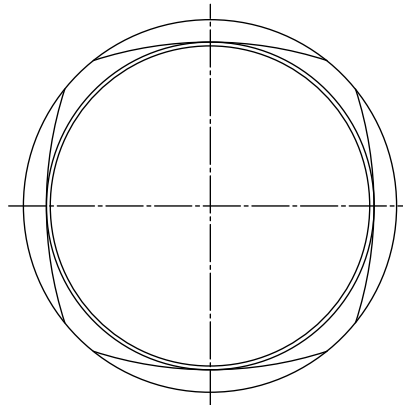
side D	number
OD .....	
OD .....	
OD .....	

side A

conduit connection\*)

side A	number
OD .....	
OD .....	
OD .....	

side D



side B

conduit connection\*)

side C	number
OD .....	
OD .....	
OD .....	

side C

conduit connection\*)

side B	number
OD .....	
OD .....	
OD .....	

company: \_\_\_\_\_

contact person: \_\_\_\_\_

tel. / fax: \_\_\_\_\_

E-mail: \_\_\_\_\_

stamp
_____
date, signature