

# PROJECT QUESTIONNAIRE

## ROMOLD - energy compensating chamber DN 800

order       request for information

Romold GmbH  
 Sägewerkstraße 5  
 D-83416 Surheim  
 Tel: +49-8654-4768-0  
 Fax: +49-8654-4768-47  
 E-mail: verkauf@romold.de



edited: 10/2017

project: \_\_\_\_\_

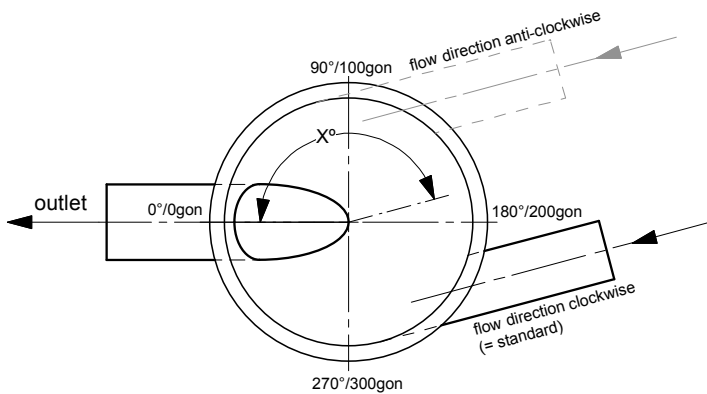
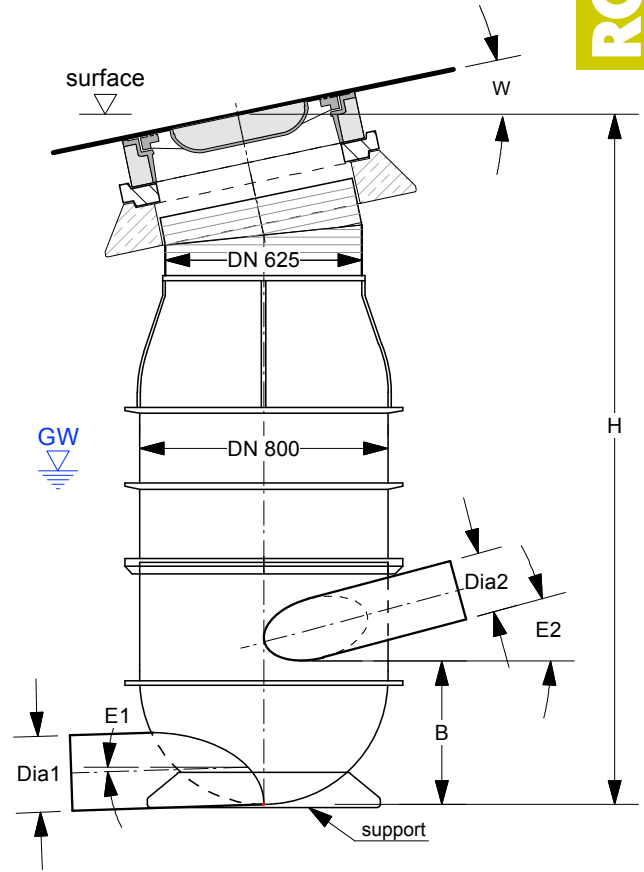
manhole no.: \_\_\_\_\_

depth H [m]: \_\_\_\_\_  
surface to channel

ground water level [m]: \_\_\_\_\_  
ground water depth relative to surface

commercial cover  
 class:  B125    D400  
please indicate

cone inclination W [%]: \_\_\_\_\_



recommended pipe dimensions for EC manhole DN 800:  
 inlet max. DN/OD 250 (with larger sized pipe connections  
 outlet max. DN/OD 400 if necessary, use manhole DN 1000)

PE - round bottom manhole DN 800 and 1000 with or without steps in accordance with national safety requirements.

	DN/OD PVC, PP	PE Dia [mm] x e [mm]	others, clay pipe, concrete	bed drop B	horizontal angle [ ° ]	pipe gradient E1, E2 [%]	water quantity [l/s] required information	special design, please check!	
								anti- clockwise	
outlet Dia 1				----	0°				
inlet Dia 2									
inlet Dia 3									

company: \_\_\_\_\_

contact person: \_\_\_\_\_

tel. / fax: \_\_\_\_\_

E-mail: \_\_\_\_\_

stamp

\_\_\_\_\_

date, signature