

ASSEMBLY- AND INSTALLATION NOTES

FOR ONE-PART ROAD GULLIES

1. GENERAL INFORMATION

ROMOLD PP/PE road gullies are delivered ready for connection.

All components must be checked for damage or contamination before installation and if necessary cleaned or replaced. Damaged components may not be installed!

Technical details:

- Material: made of 100 % virgin material Polyethylen (PE) or Polypropylen (PP)
- Pipe line pluggable or weldable (with waste water welding socket)
- Connection nominal diameter DN/OD 160
- suitable for customary gratings 500 x 300 mm or 500 x 500 mm

2. EXCAVATION

The excavation or the size of the head hole has to be created in a way, that there is enough workspace for the necessary work.

3. INSTALLATION

Compress the natural ground if needed.

The bearing of the road gully has to be of minimum 10 cm concrete granular subbase. C12/15. Hereby the road gully has to be bedded up to the apex area in concrete or support it from the side.

It is recommended to connect the outlet pipe before positing of the road gully. The filling on the side of the road gully to be

produced with suiting backfilling material (non-cohesive earth or earth of low cohesion acc. to DIN 18196, e. g.: Kgravel/sand mixture, natural grain material particle size 0–32 mm or crushed material particle size 0–16 mm).

Arrange the backfilling material in layers and compress it. If necessary can the road gully be cut by max. 10 cm with a saw suiting for woodworking. The shortening has to be done always underneath the ribs, that the shift protection for the bearing ring stays put. The ribs on the building part must be bedded completely and carefully in backfilling material or frost protection material (big stones has to be removed). Potential hollows between kerb and the back of road gully are to be filled with trickling material or concrete.

4. TOP PART

Upside the road gully the bearing ring acc. to DIN 4052, Typ 10a for grating 500 x 500 mm or Typ 10b for grating 500 x 300 mm has to be put on. The use of polymer bearing rings (dimensions acc. to DIN 4052, Typ 10a or Typ 10b) is possible. Further are the polymer bearing rings with cross slope for use in spiky gully

Moreover polymer bearing rings with cross slope are offered from ROMOLD for the use in spiky and pendulum gully. On top of the bearing ring customary inlet grates are to be placed.





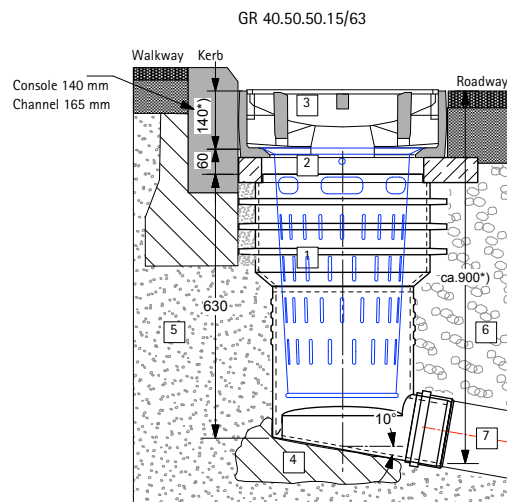
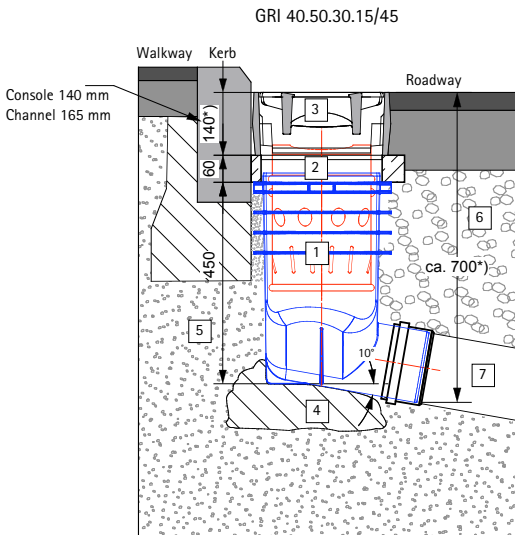
GR 40.50.30.15/45-x° BI



GRI 40.50.50.15/45 BI



GR 40.50.50.15/63 BI



KEY

- 1 ROMOLD PP road gully
- 2 Bearing ring plastic/concrete (catalogue page 73)
- 3 Grating 450 x 450, Class C/D acc. ÖNorm B 5110
- 4 Lean concrete bearing, h = mind. 10 cm
- 5 Compressible backfill material
- 6 Frost protection layer road bed
- 7 Connecting pipe line DN/OD 160

For assembly- and installation notes „to go“, scan QR-Code.



3. Min.: bedding in lean concrete mix



5. Min.: height adjustment



7. Min.: backfilling and compacting



15. Min.: assembly of grating



ROMOLD GmbH
Sägewerkstr. 5
D-83416 Surheim
Tel. 0 86 54 -47 68-0
www.romold.de
E-Mail: info@romold.de

ASSEMBLY- AND INSTALLATION NOTES

FOR TWO-PART ROAD GULLIES WITH WET SLUDGE TRAP

1. GENERAL INFORMATION

ROMOLD PE road gullies are provided ready to connect. All components must be checked for damage or contamination before installation and if necessary cleaned or replaced. Damaged components may not be installed! All supplied element seals have to be stored packed, protected from frost and direct sunlight.

Technical details:

- Material: made of 100 % virgin material Polyethylen (PE)
- Pipe line for socket ended- bzw. welded possible (with waste-water-welding socket)
- Connection nominal diameter: DN/OD 160 to DN/OD 200
- Suiting for commercial gratings 500 x 300 mm respectively 500 x 500 mm

2. EXCAVATION

The Excavation respectively the size of the head hole has to be made in a way that there is enough work room for the necessary working steps.

3. INSTALLATION

The upcoming ground compressing if needed.

The bearing of the road gully has to be executed from a at least 10 cm strong concrete granular subbase C12/15. Adjust road gul-

ly according to the outlet direction. Then bed the gully at least up to the OK semi-ball in concrete or support it laterally.

The laterally filling of the road gully is to be made with suiting filling material (non cohesive or low cohesive soils as per DIN 18196, e.g. gravel/sand mixture, natural grain material particle size 0 to 32 mm or crushed material particle size 0 to 16 mm). Build in the filling material in layers and compress it.

For connection of pipe DN/OD 200 cut the outlet nozzle DN/OD 160 and deburr it. Sockets with smooth walled plastic pipes can be directly connected, for other pipe materials or profiled pipes has to be used conversion adapters. If needed can the bottom part of the road gully (depends on the version) be shortened with a wood saw in the cylindrical part for max. 46 cm respectively max. 2,5 cm.

Eventual cut surfaces are to be deburred and than the item seal put on at the above end. Clean ROMOLD item seal, if necessary and provide it with enough lubricant.

For the next step put up the conversion adapter without tilting on the kerb and bring together to the stop. The ribs on the building part have to be completely bedded carefully in backfill material respectively frost protection material (remove big stones). The connection of drainage pipes or additional pipe connections takes place through bore of the road gully (in cylindrical parts) with a core drill and the insertion of a lip seal. Core drill and lip seal are available as accessories from ROMOLD.



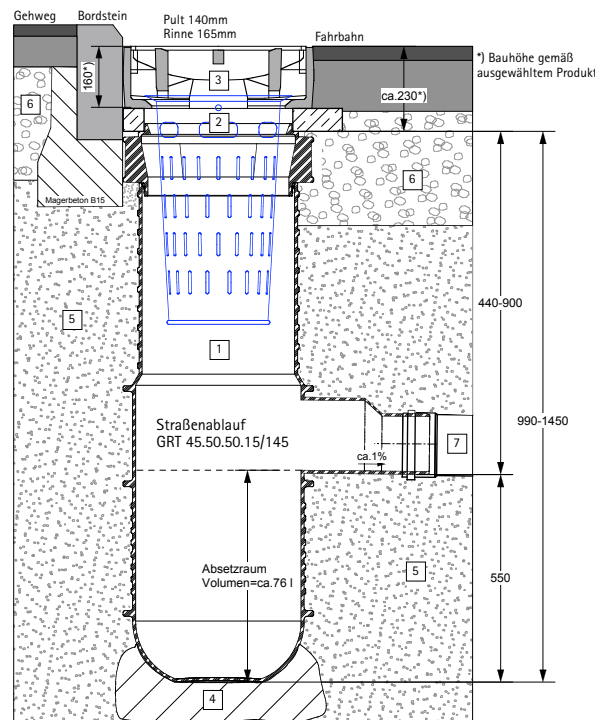
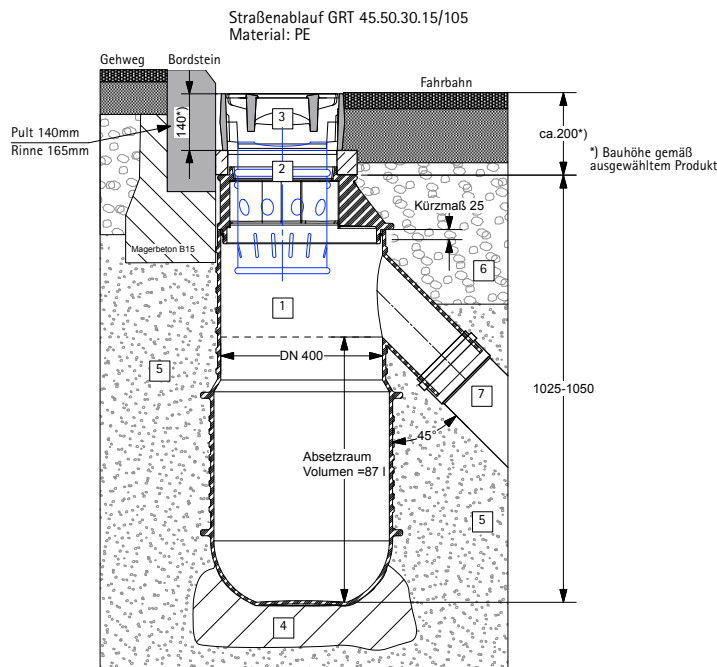


GRT 45.50.30.20.15/200 GRT 45.50.50.20.15/145 GRT 45.50.50.15/105

4. GRATING

On the upper side of the road gully will be placed the bearing ring according to DIN 4052, Typ 10a for grating 500 x 500 mm respectively. Typ 10b for grating 500 x 300 mm. The use of polymere bearing rings (measurement according DIN 4052, Typ 10a respectively Typ 10b) is

possible. Further are offered polymere bearing rings with cross slope for use in spiky gully/pendulum gully from ROMOLD. The customary inlet grates has to be placed on the bearing ring.



KEY

- 1 ROMOLD PE road gully
- 2 Bearing ring plastic/concrete (catalogue page 73)
- 3 Grating 500 x 500 or 300 x 500, Class D acc. DIN 19594
- 4 Lean concrete bearing, h = mind. 10 cm
- 5 Compressible backfill material
- 6 Frost protection layer road bed
- 7 Connecting pipe line DN/OD 200/160

For assembly- and installation notes „to go“, scan QR-Code.



ROMOLD GmbH
 Sägewerkstr. 5
 D-83416 Surheim
 Tel. 0 86 54 -47 68-0
 www.romold.de
 E-Mail: info@romold.de

ASSEMBLY- AND INSTALLATION NOTES

FOR TWO-PART ROAD GULLIES FOR LONGITUDINAL DRAINAGE

1. GENERAL INFORMATION

ROMOLD PE road gullies are provided ready to connect. All components must be checked for damage or contamination before installation and if necessary cleaned or replaced. Damaged components may not be installed! All supplied element seals have to be stored packed, protected from frost and direct sunlight.

Technical details:

- Material: made of 100 % virgin material Polyethylen (PE)
- Pipe line for socket ended- bzw. welded possible (with waste-water-welding socket)
- Connection nominal diameter: DN/OD 160 to DN/OD 315
- Suiting for commercial gratings 500 x 300 mm respectively 500 x 500 mm

2. EXCAVATION

The Excavation respectively the size of the head hole has to be made in a way that there is enough work room for the necessary working steps.

3. INSTALLATION:

The upcoming ground compressing if needed.

The bearing of the road gully has to be executed from a at least 10 cm strong concrete granular subbase C12/15. Adjust road gul-

ly according to the outlet direction. Then bed the gully at least up to the apex area in concrete or support it laterally.

For connection of the bigger pipe diameter cut the smaller outlet spigot and deburr it. For connection of the inlet pipes drill the appropriate connection holes with a core drill, deburr it and put the seal in. The connection or drainage pipes or additional pipes can be done through drilling of the road gully (in cylindrical parts) like described above. Smooth walled plastic pipes can be directly connected, for other pipe materials or pipes with profile there are conversation adapters to be used. Core drills and lip seals are offered from ROMOLD as accessories.

The lateral filling of the road gully with suiting filling material, non cohesive or low cohesive soils as per DIN 18196, e.g. gravel/sand mixture, natural grain material particle size 0 to 32 mm or crushed material particle size 0 to 16 mm. Build in the filling material in layers and compress it.

If needed can the bottom part of the road gully (depends on the version) be shortened with a wood saw in the cylindrical part for max. 46 cm. Eventual cut surfaces are to be deburred and than the item seal put on at the above end. Clean ROMOLD item seal, if necessary and provide it with enough lubricant.

For the next step put up the conversion adapter without tilting on the kerb and bring together to the stop. The ribs on the building part have to be completely bedded carefully in backfill material respectively frost protection material (remove big stones). Core drill and lip seal are available as accessories from ROMOLD.





GRT 3B 45.50.XX.20.15/105



GRT 1B 45.50.30.30.25/105



GRT 3BL 45.50.XX.30.25/115

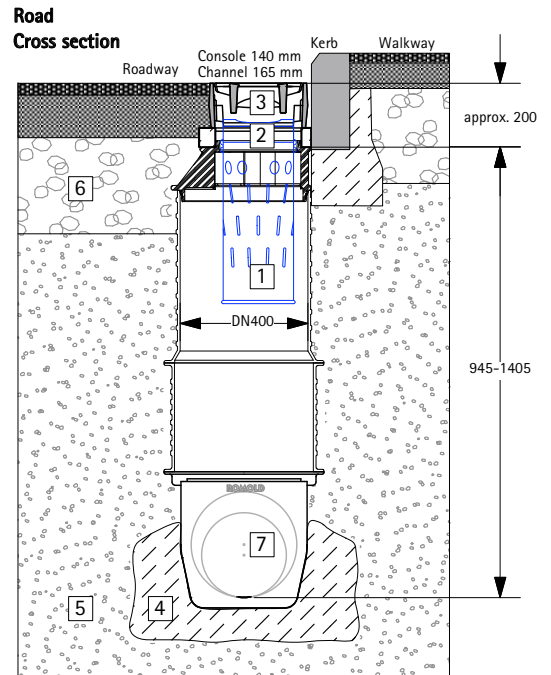
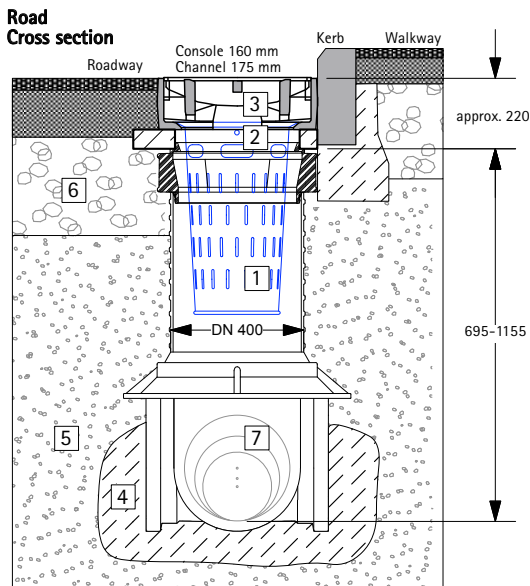


GRT 3BL 45.50.XX.40/130

4. GRATING:

On the upper side of the road gully will be placed the bearing ring according to DIN 4052, Typ 10a for grating 500 x 500 mm respectively. Typ 10b for grating 500 x 300 mm. The use of polymere bearing rings (measurement according DIN 4052, Typ 10a respectively Typ 10b) is possible.

Further are offered polymere bearing rings with cross slope for use in spiky gully/pendulum gully from ROMOLD. The customary inlet grates has to be placed on the bearing ring..



KEY

- 1 ROMOLD PP road gully
- 2 Bearing ring plastic/concrete (catalogue page 73)
- 3 Grating 450 x 450, Kl. C/D acc. ÖNorm B 5110
- 4 Lean concrete bearing, h = mind. 10 cm
- 5 Compressible backfill material
- 6 Frost protection layer road bed
- 7 Connecting pipe line DN/OD 160

For assembly- and installation notes „to go“, scan QR-Code.



ROMOLD GmbH
 Sägewerkstr. 5
 D-83416 Surheim
 Tel. 0 86 54 -47 68-0
 www.romold.de
 E-Mail: info@romold.de